

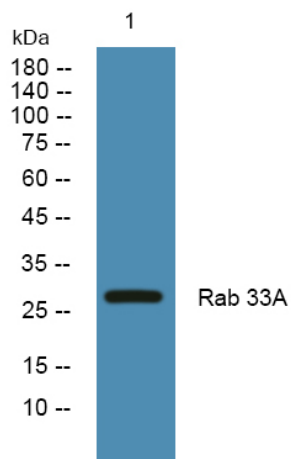


# Rab 33A Polyclonal Antibody

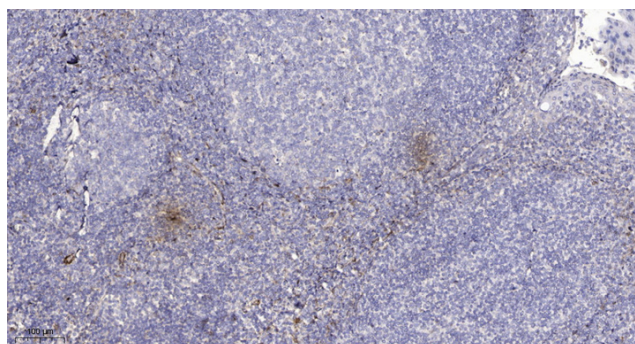
<b>Catalog No</b>	YP-Ab-16197
<b>Isotype</b>	IgG
<b>Reactivity</b>	Human;Mouse;Rat
<b>Applications</b>	WB; ELISA;IHC
<b>Gene Name</b>	RAB33A
<b>Protein Name</b>	Ras-related protein Rab-33A
<b>Immunogen</b>	The antiserum was produced against synthesized peptide derived from human RAB33A. AA range:132-181
<b>Specificity</b>	Rab 33A Polyclonal Antibody detects endogenous levels of Rab 33A protein.
<b>Formulation</b>	Liquid in PBS containing 50% glycerol, 0.5% BSA and 0.02% sodium azide.
<b>Source</b>	Polyclonal, Rabbit,IgG
<b>Purification</b>	The antibody was affinity-purified from rabbit antiserum by affinity-chromatography using epitope-specific immunogen.
<b>Dilution</b>	WB 1:500-2000;IHC-p 1:50-300; ELISA 2000-20000
<b>Concentration</b>	1 mg/ml
<b>Purity</b>	≥90%
<b>Storage Stability</b>	-20°C/1 year
<b>Synonyms</b>	RAB33A; RABS10; Ras-related protein Rab-33A; Small GTP-binding protein S10
<b>Observed Band</b>	27kD
<b>Cell Pathway</b>	Cell membrane ; Lipid-anchor ; Cytoplasmic side .
<b>Tissue Specificity</b>	Expressed only in lymphoid cell lines.
<b>Function</b>	similarity:Belongs to the small GTPase superfamily. Rab family.,tissue specificity:Expressed only in lymphoid cell lines.,
<b>Background</b>	The protein encoded by this gene belongs to the small GTPase superfamily, Rab family. It is GTP-binding protein and may be involved in vesicle transport. [provided by RefSeq, Jul 2008],
<b>matters needing attention</b>	Avoid repeated freezing and thawing!
<b>Usage suggestions</b>	This product can be used in immunological reaction related experiments. For more information, please consult technical personnel.



## Products Images



Western blot analysis of lysates from SH-SY5Y cells, primary antibody was diluted at 1:1000, 4° over night



Immunohistochemical analysis of paraffin-embedded human tonsil. 1, Antibody was diluted at 1:200 (4° overnight). 2, Tris-EDTA, pH 9.0 was used for antigen retrieval. 3, Secondary antibody was diluted at 1:200 (room temperature, 45 min).